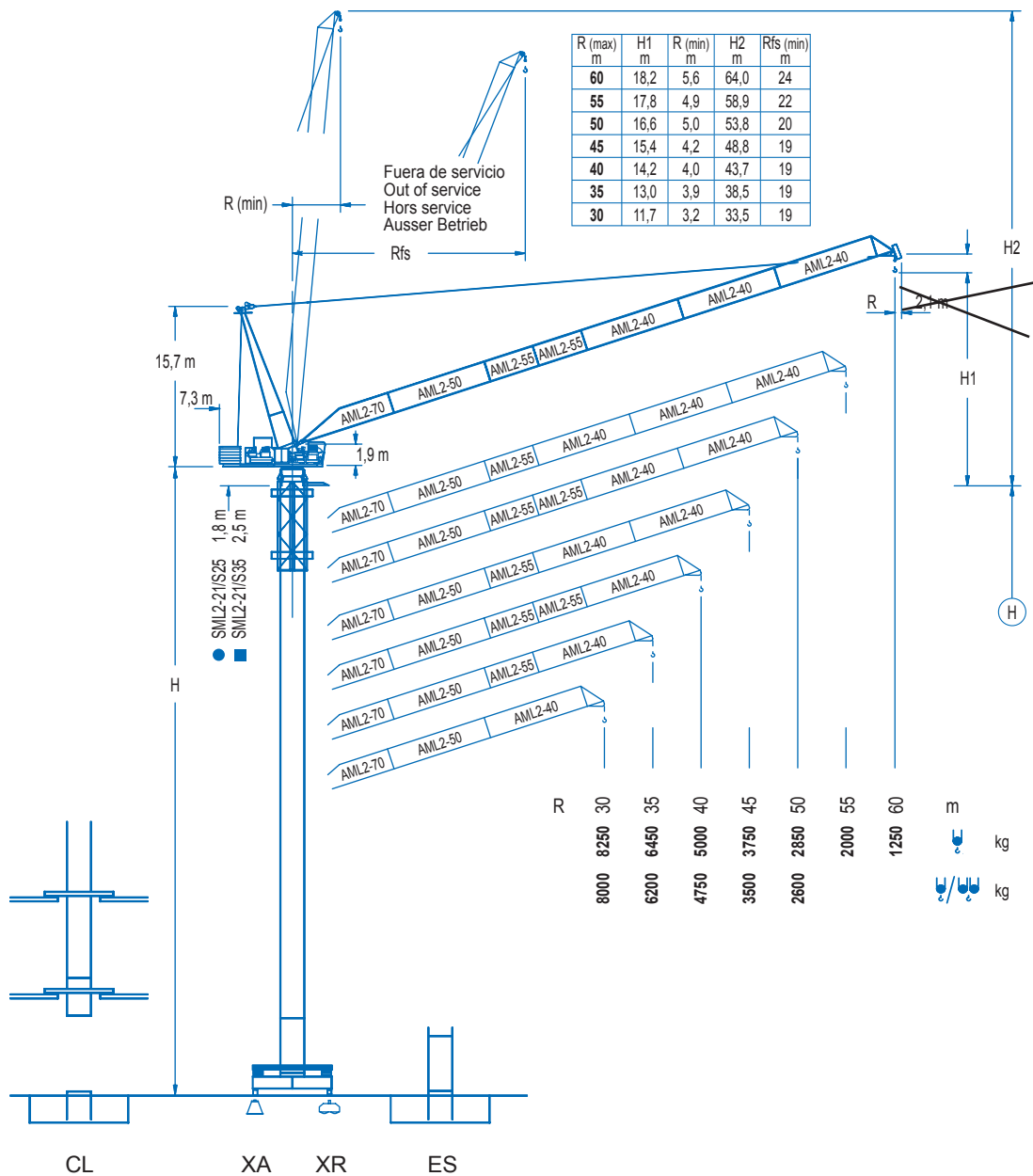


**LCL**

**LCL 190**

**18 t**

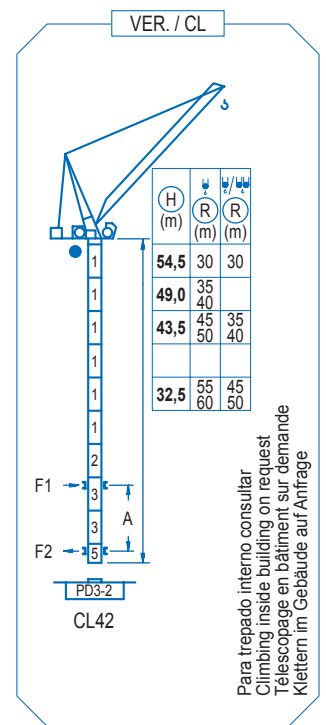
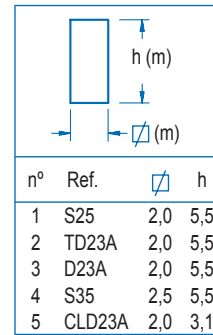
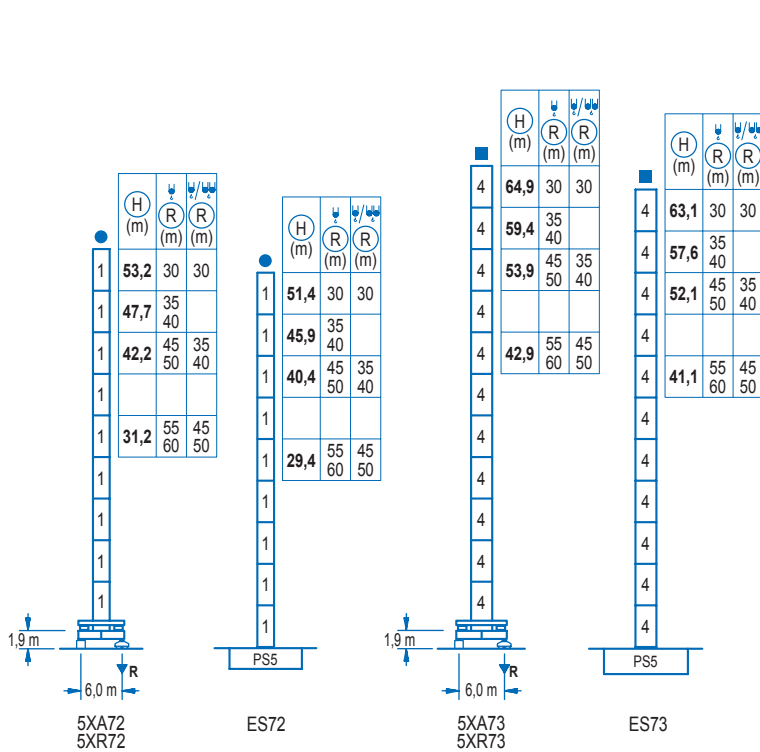


R	30	35	40	45	50	55	60	
8000	8250	6200	4750	3500	2600	2000	1250	m
		6450	5000	3750	2850			kg
			4750	3500	2600			kg

**CE** EN 14439 (C/25)

R (m)	R <sub>Cmax</sub> (m)	10	15	20	25	30	35	40	45	50	55	60
60	24,0			9000	8170	5490	4010	3070	2420	1940	1560	1250
55	24,8			9000	8860	6260	4730	3720	3000	2450	2000	
50	25,9				9000	6970	5360	4280	3480	2850		
45	27,2				9000	7600	5860	4660	3750			
40	27,7				9000	7950	6240	5000				
35	29,4				9000	8670	6450					
30	29,0				9000	8250						

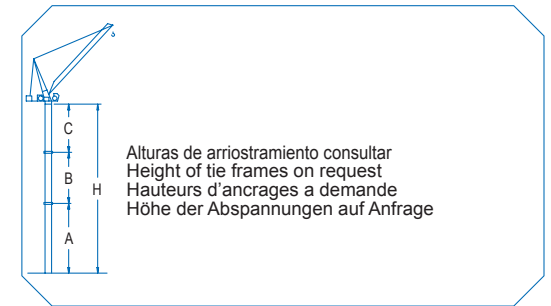
R (m)	R <sub>Cmax</sub> (m)	10	15	20	25	30	35	40	45	50	55	60
60												
55												
50	12,3	18000	13550	9160	6810	5340	4340	3610	3050	2600		
45	11,7	18000	13360	9500	7280	5840	4830	4080	3500			
40	13,5	18000	15810	11150	8520	6820	5630	4750				
35	15,0		18000	12540	9500	7560	6200					
30	16,5		18000	13860	10280	8000						



Para trepado interno consultar  
Climbing inside building on request  
Telescopage en bâtiment sur demande  
Klettern im Gebäude auf Anfrage

<b>R. máx.</b>	En servicio In operation En service In Betrieb	5XR72..... t 5XR73..... t	<b>R. máx.</b>	Fuera de servicio Out of service Hors service Ausser Betrieb	5XR72..... t 5XR73..... t
----------------	---	------------------------------	----------------	---	------------------------------

Para otras zonas de viento o alturas superiores consultar  
For other wind zones or additional hook heights on request  
Pour d'autres zones de vent ou des hauteurs supplémentaires sur demande  
Für andere Windzonen oder weiteren Hakenhöhen auf Anfrage

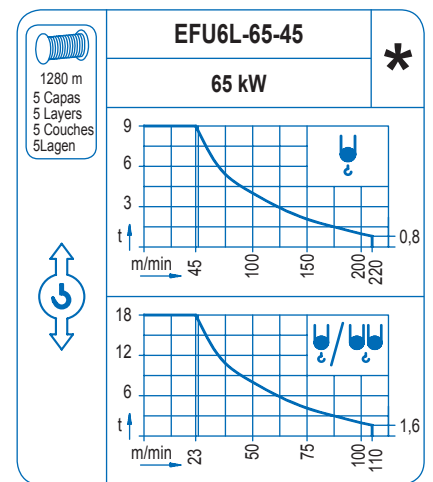
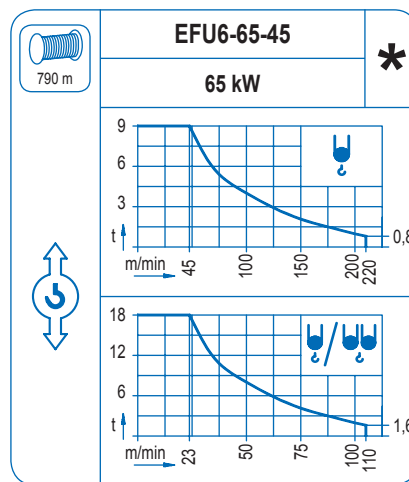
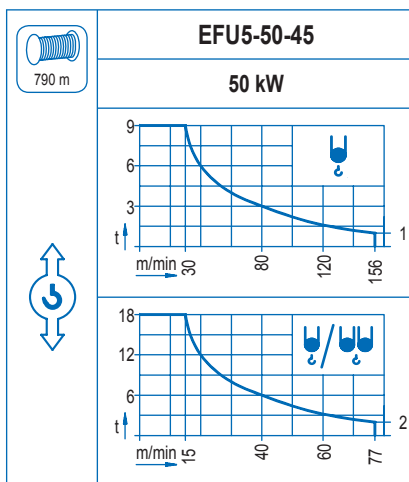


	<b>AFU2-45-40</b> 45 kW
1,8 min	

	<b>GR-12</b> 2 x 120 Nm
0 ⇄ 0,7 rpm	

	<b>TRA-7.5</b> 2 x 75 Nm
0 ⇄ 20 m/min	

	<b>TRA-7.5VC</b> 2 x 75 Nm	*
0 ⇄ 20 m/min		



Tensión de alimentación Operating voltage Tension de service Betriebsspannung	400 V 3 ph 50 Hz
--	------------------------

**RADIUS**  
Cranes Australia  
www.radiuscranes.com Phone 1800 300 901

Opcional Optional En option Kaufoption	*
---	---