

Linden Comansa expands its range of Luffing-Jib Tower Cranes



Tower crane manufacturer Linden Comansa introduces two new models of luffing-jib cranes, which will be available for purchasing by the end of April. These new cranes, LCL 310 and LCL 280, altogether with the LCL 190 presented last year in Bauma, form the new family of luffing-jib cranes from Linden Comansa, which will be completed this summer with the launch of a fourth model (LCL 165).

The design and development of the whole series has been based again in Linden Comansa's modular system. That is why most jib sections are interchangeable between the cranes of the series. The tower sections are not only interchangeable with the cranes of the same series, but with the models of other series of Flat-Top cranes too.

Among the many advantages of the series, stands out the easiness for both erection and transportation. These cranes are designed with the hoist mechanism at the front, under the jib and near the cabin. The luffing mechanism, with its emergency second brake, and the electrical cabinet for the control of the crane are placed on the counterjib. This unique design allows to reduce the installation weights and the slewing radius of the counter-jib. Furthermore, hoisting and luffing cables come preinstalled from the factory for faster installation of the crane.



Regarding technological characteristics, both cranes bring the new features included on the LCL 190: the electronic coordination between the luffing and hoisting mechanisms that, with a push-button, allows to move the load horizontally when operating only the luffing movement (popularly known by "level luffing" - See graphic *); the hydraulic push and retention system, with a progressive force application on the jib in relation to the luffed-in radius, allowing a smooth movement; the travel control of the luffing movement; and an anti



* Electronic coordination between the luffing and hoisting mechanisms (Level luffing)

loosening system for the luffing cable tension.

Each of the two new cranes comes in three versions, depending on its maximum load: 12, 18 and 24 tonnes. Their main characteristics are summarized in this table:

Model	LCL 280			LCL 310		
	LCL 280 12t	LCL 280 18t	LCL 280 24t	LCL 310 12t	LCL 310 18t	LCL 310 24t
Maximum load [t]	12	18	24	12	18	24
Jib end load - 60 meters [t]	2.9	2.9	2.6	3.5	3.5	3.2
Maximum jib length [m]	60			60		
Minimum jib length [m]	30			30		
Jib length steps [m]	5			5		
Maximum freestanding height [m]	53.2			56.9		

1 | 2 Page

RADIUS CRANES AUSTRALIA PTY LTD - ACN 117 080 234 ATF
RADIUS CRANES TRUST - ABN 18 808 687 927

P.O. BOX 3377,
 ROBINA TOWN CENTRE , 4230. Australia.

Toll Free - 1800 300 901



Contact: Richard Anderson
 Ph. 0414 888 808
 Phone +61 414 888 808

Email - richard.anderson@radiuscranes.com

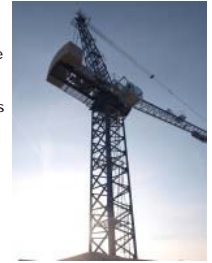


Click on the image to enlarge

These luffers can be erected with the already existing 6 meter wide cross base, or Linden Comansa's new 8 meter wide cross base, which can be easily folded to be transported in one truck or container in a single bundle. This 8 meter base can be used in other models of Linden Comansa cranes to increase the heights up to 30%. Furthermore, this base can be used on the cranes 21 LC 750 and LCL 500, models which could only be erected until now with the 10 meter base. With this new product, Linden Comansa completes its range and offers a new solution between the already existing bases, 6 and 10 meter wide respectively.

The launch of this series of luffing-jib cranes, with the 8 meter base altogether, is another step forward from Linden Comansa in its going for its modular system, already used on all tower cranes. Furthermore, the series include many technical and structural solutions that improve the performance of the cranes and optimize the retail price, achieving a completely new and highly competitive series of cranes.

At the same time, Linden Comansa has seized the opportunity to test the prototype of the new Panoramic XL cabin, which will soon be available as an option in the LCL series of luffers and LC2100 series of tower cranes. It keeps the same advantages of the standard Panoramic cabin (acoustic insulation, full view of the load and work area, tinted glass, etc.), but it is half a meter longer, which means more space for the comfort of the crane operator. Furthermore, it includes a small refrigerator, an air handling unit (instead of an air conditioning) and space to place a microwave or any other small appliance to improve the worker's comfort.



2 | 2 Page

RADIUS CRANES AUSTRALIA PTY LTD - ACN 117 080 234 ATF
RADIUS CRANES TRUST - ABN 18 808 687 927

P.O. BOX 3377,
 ROBINA TOWN CENTRE , 4230. Australia.

Toll Free - 1800 300 901



Contact: Richard Anderson
 Ph. 0414 888 808
 Phone +61 414 888 808

Email - richard.anderson@radiuscranes.com